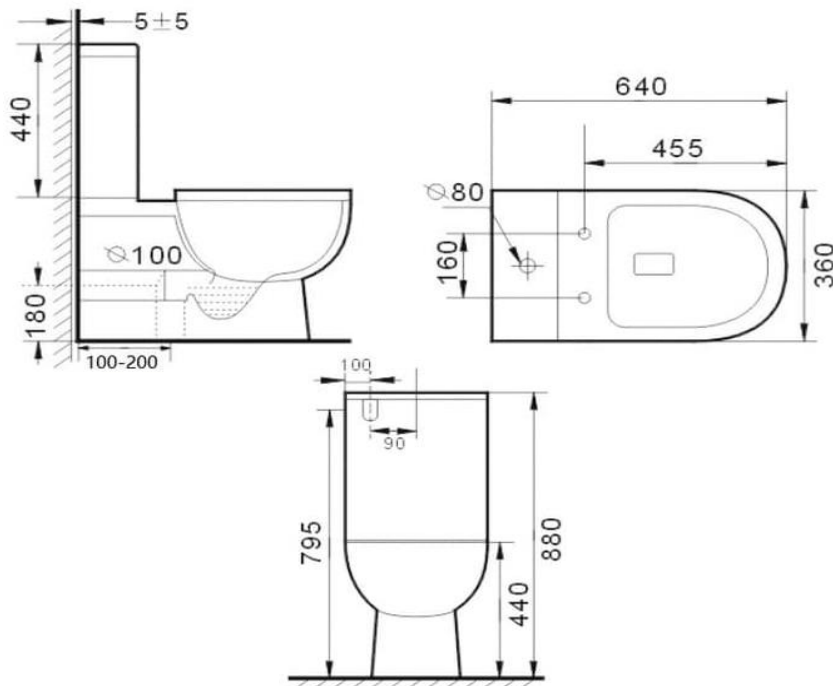


# BIANCO-II TOILET SUITE



WELS Reg No: L05778

SPECIFICATIONS



Rimless Wall Faced Toilet Suite

Suitable for S or P Trap

Dual Flush: 4.5L full flush and 3L half flush

Complies with AS1428.1 as an Ambulant Toilet

Soft Closing Detachable Seat

**WARRANTY INFORMATION:**

15 Years Replacement Warranty on Ceramic

3 Year Replacement on Toilet Valves

1 Year Replacement for Toilet Seats and Hinges

All products have a full 1 year in house labour warranty from date of purchase (Excluding Seat and Hinges)